

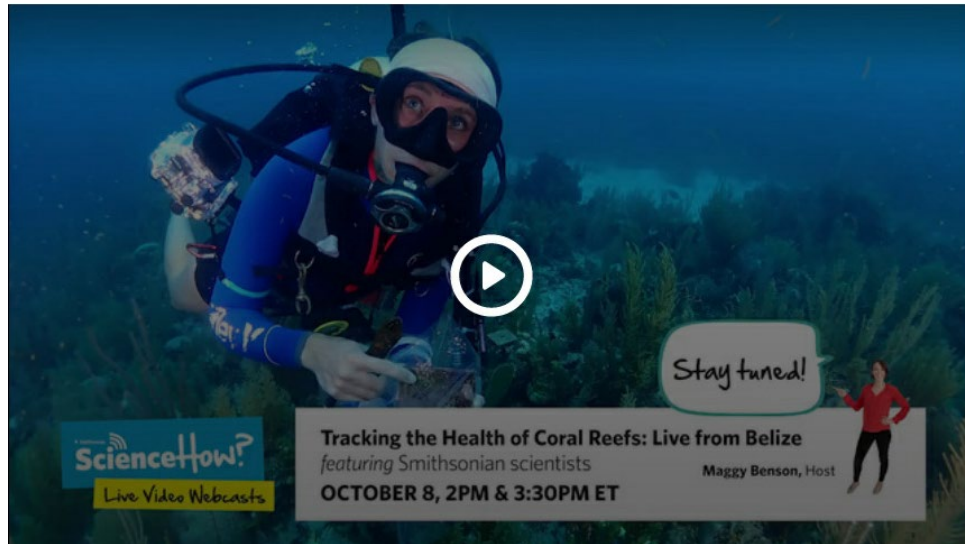
## Smithsonian Science How Webcasts: Technical Requirements and Troubleshooting Guide

### Suggested technical requirements for participating in a live webcast:

- Suggested bandwidth of 5.0Mbps download (webcast will run with just 500KB download at a lower quality; check your speed at [SpeedTest.net](http://SpeedTest.net))
- Display screen large enough for audience size (Smartboards, Prometheans, monitors, computers should all be compatible)
- External speakers for entire audience to hear
- Device (computer, tablet, smart phone) for submitting questions to the expert, answering live polls during broadcast. If you are using one computer to show the video full-screen, you may want to have a second device available so you can participate in the live online polls and chat.
- Teacher or group leader to facilitate group responses, questions

### Preparing for the live webcast:

- You can submit student questions via e-mail ([sciencehow@si.edu](mailto:sciencehow@si.edu)) or online chat prior to the live broadcast
- Review teaching resources on the museum website for each broadcast (for pre/post)
- Use listed standards to help integrate webcast into lessons
- Test your Internet connection in advance
- Test the UStream video connection in advance, if possible. (We use a service called Ustream to broadcast live video online.)
  - Go to the show's web page and make sure you can see and hear our "Stay Tuned" video (see example below). We publish a "Stay Tuned" test video a day or two before the show. Ustream recommends using Firefox or Chrome browsers:

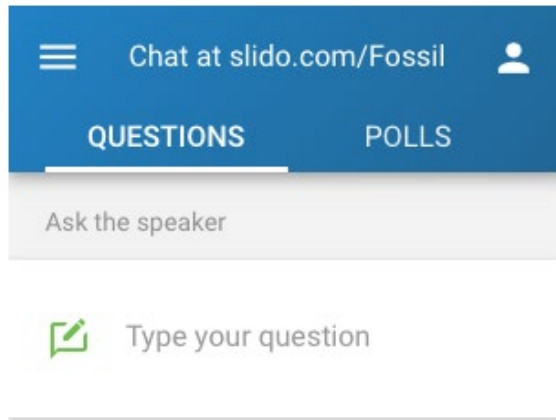


- If you can't see it or hear the audio, try reloading the page.

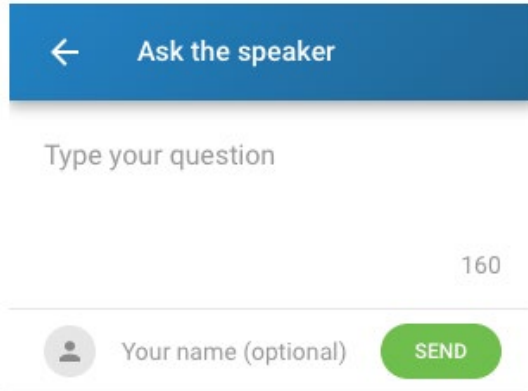
- Or UStream might be blocked by the Internet firewall at your school. Contact your IT specialist to make an exception for the broadcast and unblock Ustream (the Web domain is Ustream.tv)
- Still having trouble seeing the video? Review Ustream’s troubleshooting steps here, [View troubleshooting steps for Ustream](#)
- Or Watch the Video on Ustream: <https://ustream.tv/channel/5K2xzPggzet>
- Known Issue With Mac Laptops and iPads: Sound will be low if you are not using headphones.
- You should also see the chat window next to the video on the left. If you don’t, you may have to ask your IT specialist to unblock the Web domain Slido.com.

**Tips for participating in a live webcast:**

- Use the best network connection possible – wired is better than wireless
- Close all applications except those necessary for the webcast. This frees up the computer for better performance.
- If your computer has a Power Plan (Energy-Saving settings), choose high performance
- If you’re using a laptop, avoid running on battery - it can reduce performance
- If you use a USB hub, it should be externally powered for the device to perform well.
- Use the Firefox or Chrome web browsers for best results.
- To Ask a Question or Answer a Poll: Use the chat window next to the video. Or you can access the chat on a second screen at [slido.com/sciencehow](http://slido.com/sciencehow) for both shows.
  - Click in the “Type your question” field.



- A new entry field will appear. Enter the name you want to display in the chat, type your question, and hit “Send.”

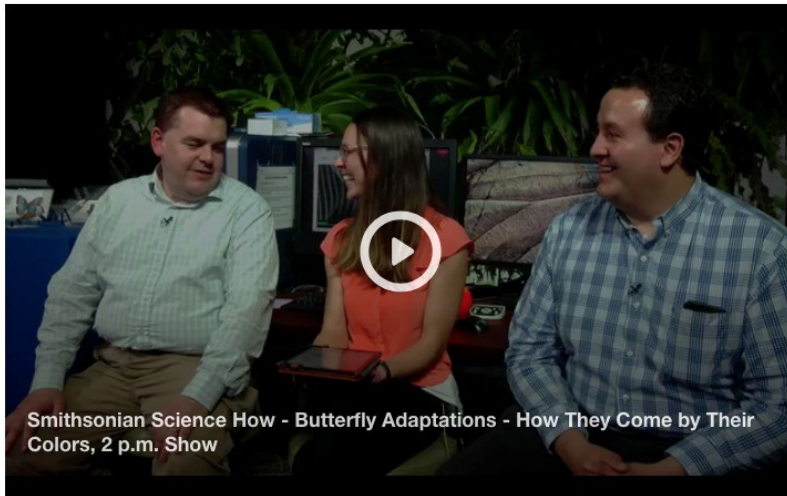


The screenshot shows a chat interface. At the top is a blue button with a white left-pointing arrow and the text "Ask the speaker". Below this is a text input field with the placeholder text "Type your question". To the right of the input field is a character count "160". At the bottom of the input field is a grey circle containing a person icon, followed by the text "Your name (optional)", and a green button with the text "SEND".

- The chat moderator will publish the questions and choose some to give to the host during the live show.

**Troubleshooting Tips for facilitating live webcasts in the classroom:**

- **Firewall** – If your school’s firewall is blocking the webcast, contact your school’s IT office for an exception and unblock the Web domain Ustream.tv
- **Bandwidth** – select lower broadcast quality on the video feed if there is disruption
- **Quality** – select higher quality video stream if the quality is poor and you have the bandwidth to support a larger feed
- **Can’t See the Video?** Click the white “play” arrow (see below). If it is past the show’s start time and you don’t see a live video, reload the page.



- **Black Screen, Video Stops and Starts or Gets Pixelated** – Close other open programs and browsers on your computer. Reload the page. If nothing else works, reboot the computer.
- **No Sound** – Make sure speakers are plugged in and turned on. If using a Mac laptop or iPad, sound will be low without headphones.

**Need More Help?**

Contact us at [sciencehow@si.edu](mailto:sciencehow@si.edu).

**Website Address:**

For more information about the webcast series, visit the Smithsonian National Museum of Natural History's Distance Learning web page here,

<https://naturalhistory.si.edu/education/distance-learning>.